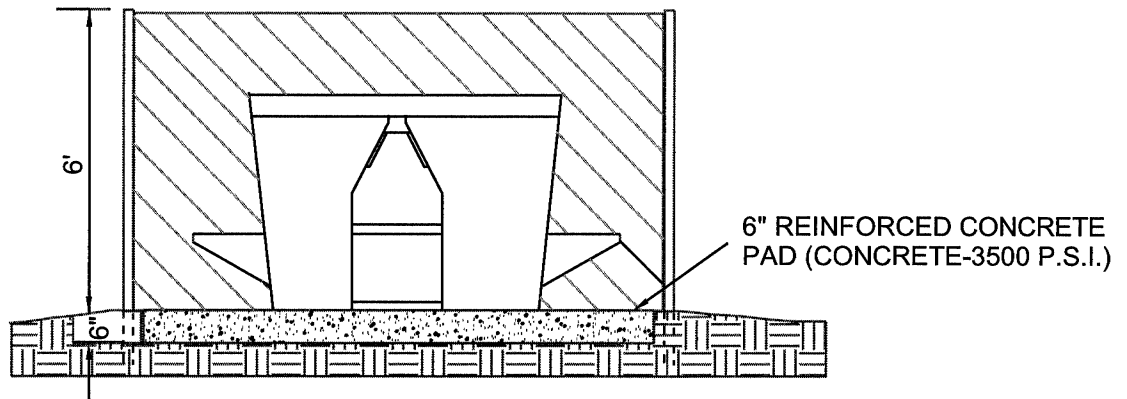


PLAN



ELEVATION

NOTES:

1. DUMPSTER PAD AND ENCLOSURE ANGLE TO DIRECTION OF DRIVE AISLE SHALL NOT EXCEED 30°.
2. A STRAIGHT LINE MANEUVERING DISTANCE OF 55' MUST BE PROVIDED FOR REFUSE VEHICLE ACCESS.
3. THE AREA ABOVE THE ENCLOSURE MUST BE FREE OF WIRES AND OTHER OVERHEAD OBSTRUCTIONS.
4. SCREENING MATERIAL MUST BE INDICATED FOR REVIEW BY THE CITY. REFER TO LAND DEVELOPMENT CODE, SECTION 6.1.15, FOR APPROVED MATERIALS.
5. DOORS ENCLOSING THE DUMPSTER PAD ARE REQUIRED.
6. THE DESIGNER MUST CONTACT A CITY FRANCHISED WASTE HAULER TO DETERMINE REQUIRED CONTAINER AND PAD SIZE.
7. PAD MUST PROVIDE POSITIVE DRAINAGE TO A STORM WATER SYSTEM.
8. DESIGNER MUST DEMONSTRATE, USING STANDARD TEMPLATES, THE REFUSE VEHICLE ACCESS ROUTE TO AND FROM THE DUMPSTER ENCLOSURE.
9. THIS DETAIL APPLIES TO BOTH REFUSE AND RECYCLING ENCLOSURES.



DUMPSTER PAD & ENCLOSURE

MI008-2

DATE: 11/03/03