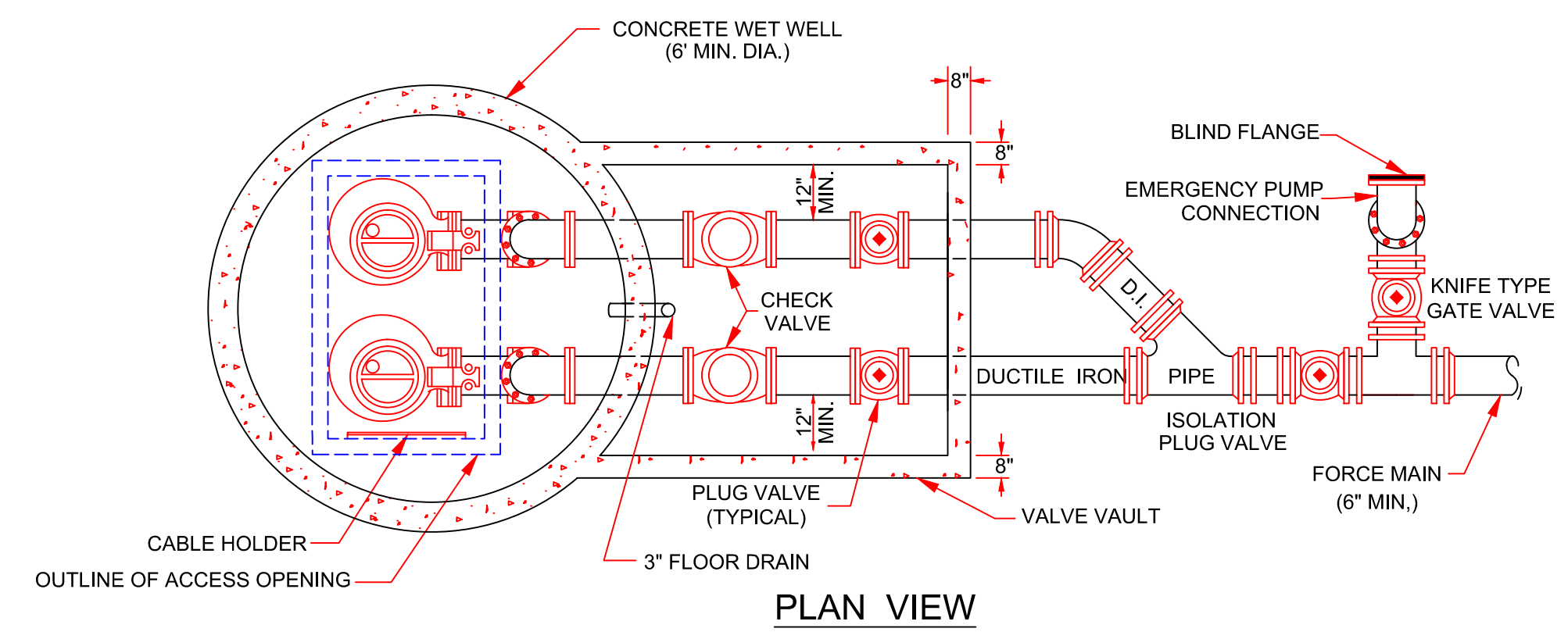


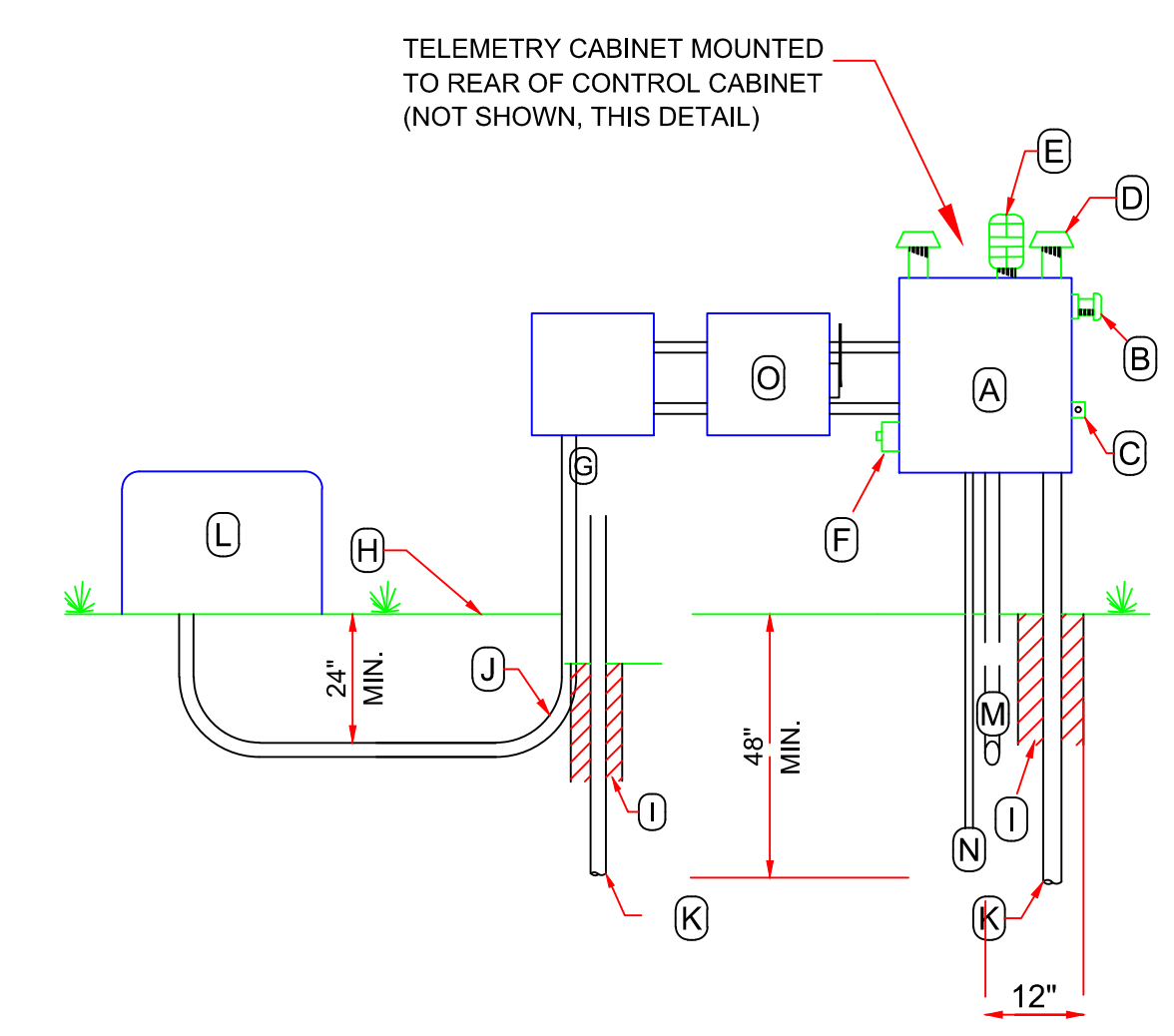
LIFT STATION ELEVATION
SS007-1A



INDEX OF REQUIRED PUMP PULLING CABLES

PUMP SIZE	REQUIRED CHAIN SIZE
0.5 HP - 5.0 HP	1/4-INCH STAINLESS STEEL CHAIN
5.5 HP - 9.4 HP	5/16-INCH STAINLESS STEEL CHAIN
9.5 HP - 18.0 HP	3/8-INCH STAINLESS STEEL CHAIN
18.8 HP AND UP	SIZE ACCORDING TO WEIGHT OF PUMP (NOT LESS THAN 3/8-INCH STAINLESS STEEL CHAIN)

LIFT STATION PLAN VIEW
SS007-1B



- A. CONTROL CABINET
- B. GENERATOR RECEPTACLE (RUSSELLSTOLL FCB 3144R ONLY)
- C. PAD LOCK BRACKET
- D. PIPE CAP
- E. RED WARNING LIGHT
- F. ALARM SHUT-OFF
- G. METER BASE
- H. GROUND ELEVATION
- I. CONCRETE FOOTING
- J. ALUMINUM POWER CONDUIT
- K. S.S. OR ALUMINUM STAND PIPE
- L. POWER TRANSFORMER
- M. CONDUIT TO MOTORS
- N. BUBBLER LINE
- O. STAINLESS STEEL KNIFE SWITCH

NOTE:
ON SUBMERSIBLE STATIONS, THE CONDUIT ENTERING THE WET WELL FOR MOTOR AND CONTROL CARDS SHALL TERMINATE WITH A FIBER BUSHING. NO SPLICES WILL BE ALLOWED IN THE WET WELL AND ALL WIRES WILL BE CONTINUOUS FROM WET WELL TO THE CONTROL CABINET.
ALL CONDUITS TO HAVE PULL WIRE.

LIFT STATION CONTROL CABINET
SS007-1C

PUBLIC WORKS & UTILITIES ENGINEERING AND DESIGN STANDARDS ISSUED 2017 <small>REVISED 03/01/2017 BY:DJB</small>	CITY OF ALTAMONTE SPRINGS 225 NEWBURYPORT AVE ALTAMONTE SPRINGS, FLORIDA 32701	DATE: X SCALE: X
	SS902-1 LIFT STATION DETAILS - CITY PROJECTS	1 SHEET 1 OF 1

SS902-1 LIFT STATION DETAILS - CITY PROJECTS.DWG REVISION 03/01/2017 BY:DJB