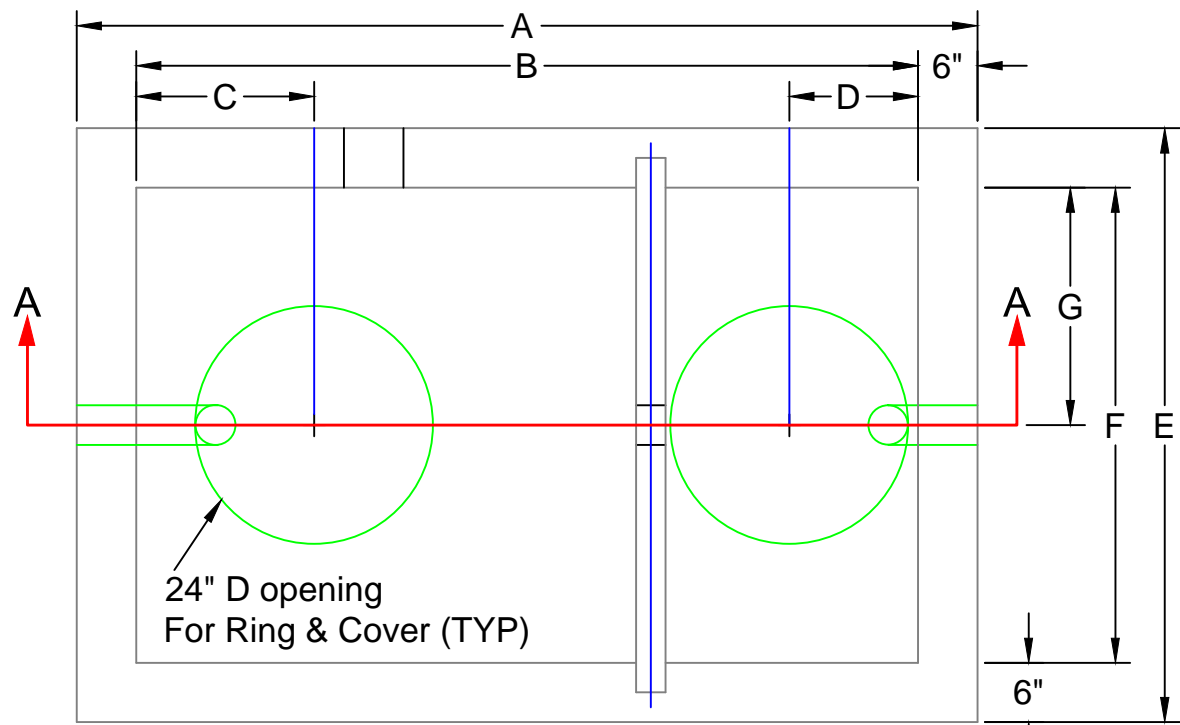
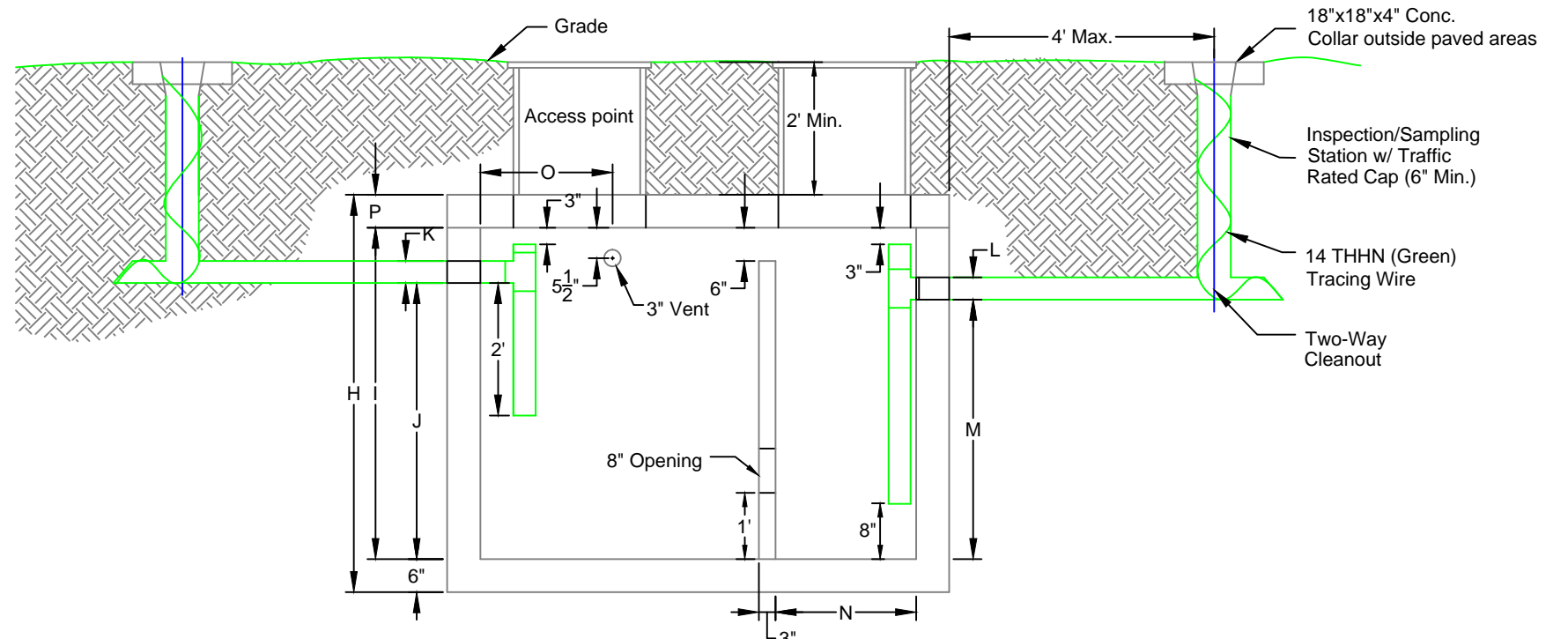


PUBLIC WORKS & UTILITIES ENGINEERING & DESIGN STANDARDS



TOP VIEW



SECTION VIEW A-A

NOTES:

1. Volume to be determined by using the City Of Altamonte Springs Sand/Oil Interceptor Sizing Spreadsheet with final approval by the City Engineer or designee.
2. Structural design must be performed by the manufacturer with shop drawings provided to City Engineer for approval and must provide H-20 loading per AASHTO.
3. Top of manhole must be minimum of six inches below the lowest finished floor with positive drainage away from the building.
4. The three inch vent must tie back to the building vent and must be installed per the Florida Building Code, latest edition.
5. The slope of the influent and effluent laterals must comply with the Florida Building Code, Latest Edition.
6. Only areas that discharge sand and oil shall be discharged to the sand/oil interceptor. All domestic waste shall be connected downstream of the sand/oil interceptor.
7. All pipes and fittings shall comply with ASTM 2665.
8. Inspection/Sampling Station required for all sand/oil interceptors.
9. All concrete shall be minimum $f_c=4500$ psi and all steel shall be minimum $f_y=60$ ksi.
10. Alternative designs must be approved by the City Engineer.

SAND AND OIL INTERCEPTOR DIMENSIONS 500 TO 3,500 GALLONS

TANK SIZE(Gal.)	A	B	C	D	E	F	G	H
500	6'-0"	5'-0"	1'-6"	1'-0"	4'-6"	3'-6"	1'-9"	6'-6"
750	7'-6"	6'-6"	1'-6"	1'-0"	5'-0"	4'-0"	2'-0"	6'-0"
1000	9'-0"	8'-0"	1'-6"	1'-6"	5'-0"	4'-0"	2'-0"	7'-4"
1250	9'-0"	8'-0"	1'-6"	1'-6"	5'-0"	4'-0"	2'-0"	7'-4"
1600	11'-6"	10'-6"	1'-6"	1'-6"	6'-0"	4'-0"	2'-0"	7'-4"
2000	11'-6"	10'-6"	1'-6"	1'-6"	6'-0"	5'-0"	2'-6"	7'-0"
2500	11'-6"	10'-6"	1'-6"	1'-6"	6'-0"	5'-0"	2'-6"	8'-4"
3000	13'-0"	12'-0"	1'-6"	1'-6"	7'-0"	6'-0"	3'-0"	9'-1"
3500	13'-0"	12'-0"	1'-6"	1'-6"	7'-0"	6'-0"	3'-0"	9'-1"

SAND AND OIL INTERCEPTOR DIMENSIONS 500 TO 3,500 GALLONS

TANK SIZE(Gal.)	I	J	K	L	M	N	O	P
500	5'-6"	4'-6"	0'-4"	0'-4"	4'-3"	1'-7"	2'-0"	0'-6"
750	5'-0"	4'-2"	0'-4"	0'-4"	3'-11"	2'-0 1/2"	2'-0"	0'-6"
1000	6'-4"	4'-5"	0'-4"	0'-4"	4'-2"	2'-10 1/2"	3'-6"	0'-6"
1250	6'-4"	5'-6"	0'-4"	0'-4"	5'-3"	2'-10 1/2"	3'-6"	0'-6"
1600	6'-0"	4'-4"	0'-4"	0'-4"	4'-1"	3'-4 1/2"	3'-6"	0'-6"
2000	6'-0"	5'-4"	0'-4"	0'-4"	5'-1"	3'-4 1/2"	3'-6"	0'-6"
2500	7'-4"	6'-7"	0'-4"	0'-4"	6'-4"	3'-4 1/2"	3'-6"	0'-6"
3000	8'-0"	5'-6 1/2"	0'-4"	0'-4"	5'-3 1/2"	3'-10 1/2"	3'-6"	0'-7"
3500	8'-0"	6'-9"	0'-4"	0'-4"	6'-6"	3'-10 1/2"	3'-6"	0'-7"



CITY OF ALTAMONTE SPRINGS
950 CALABRIA DRIVE
ALTAMONTE SPRINGS, FLORIDA 32714

SAND & OIL INTERCEPTOR - 500 TO 3,500 GALLONS

SS005-3D

ISSUED 2017

REVISED 03/01/2017 BY DJB