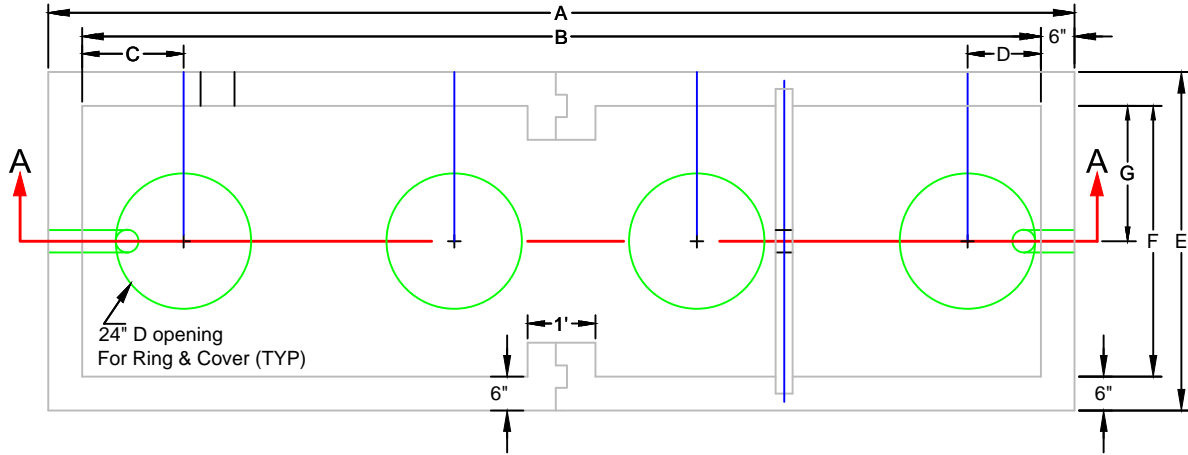
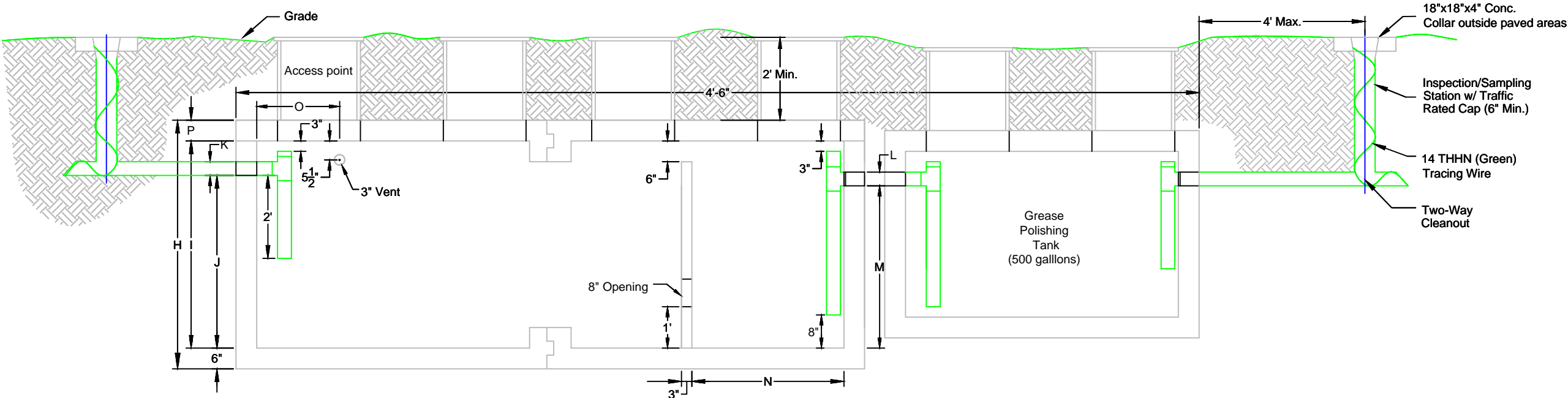


PUBLIC WORKS & UTILITIES ENGINEERING & DESIGN STANDARDS



TOP VIEW



SECTION VIEW A-A

TANK SIZE (Gal.)	A	B	C	D	E	F	G	H
4500	22'-0" min	21'-6" min	1'-6"	1'-6"	6'-0"	5'-0"	2'-6"	7'-0"
5500	22'-0" min	21'-0" min	1'-6"	1'-6"	6'-0"	5'-0"	2'-6"	8'-4"
6500	25'-0" min	24'-0" min	1'-6"	1'-6"	7'-0"	6'-0"	3'-0"	9'-1"
7500	25'-0" min	24'-0" min	1'-6"	1'-6"	7'-0"	6'-0"	3'-0"	9'-1"

TANK SIZE (Gal.)	I	J	K	L	M	N	O	P
4500	6'-0"	5'-4"	0'-4"	0'-4"	5'-1"	6'-9"	3'-6"	0'-6"
5500	7'-4"	6'-7"	0'-4"	0'-4"	6'-4"	6'-9"	3'-6"	0'-6"
6500	8'-0"	5'-6 1/2"	0'-4"	0'-4"	5'-3 1/2"	7'-9"	3'-6"	0'-7"
7500	8'-0"	6'-9"	0'-4"	0'-4"	6'-6"	7'-9"	3'-6"	0'-7"



CITY OF ALTAMONTE SPRINGS
950 CALABRIA DRIVE
ALTAMONTE SPRINGS, FLORIDA 32714

GREASE INTERCEPTOR - 4,500 TO 7,500 GALLONS

SS005-3B

ISSUED 2017

REVISED 03/01/2017 BY DJB