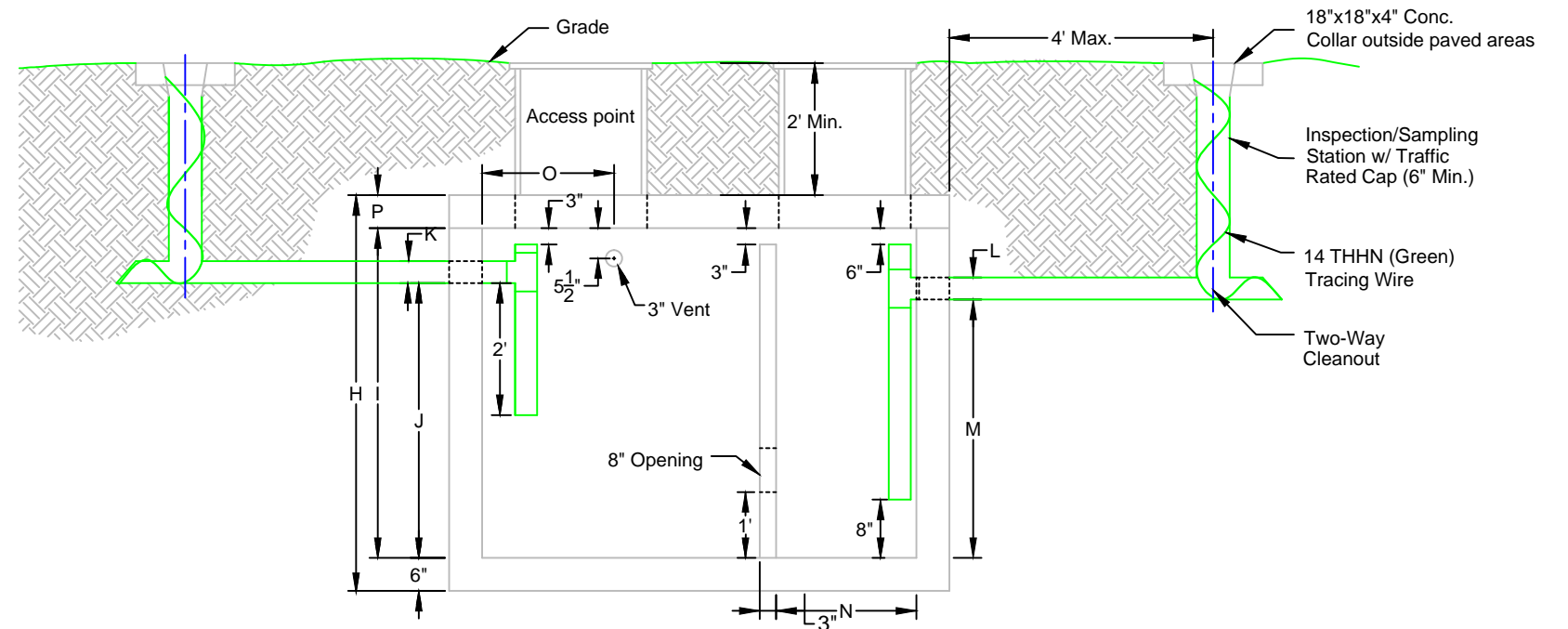
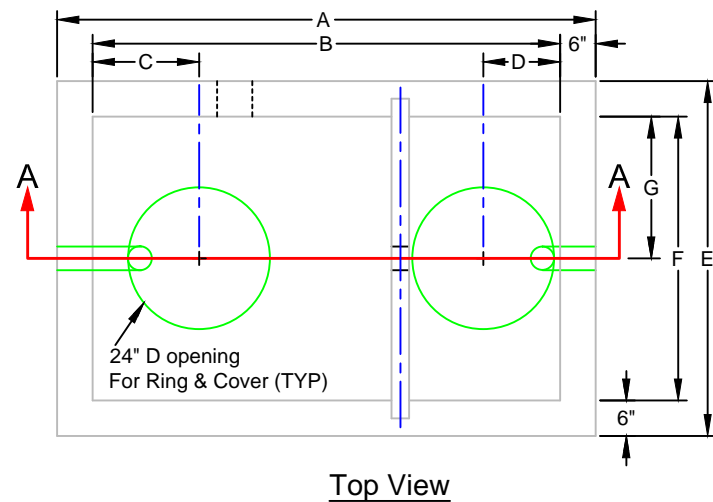


# PUBLIC WORKS & UTILITIES ENGINEERING & DESIGN STANDARDS



**NOTES:**

1. Volume to be determined by using the City Of Altamonte Springs Grease Interceptor Sizing Spreadsheet with final approval by the City Engineer or designee.
2. Structural design must be performed by the manufacturer with shop drawings provided to City Engineer for approval and must provide H-20 loading per AASHTO.
3. Top of manhole must be minimum of six inches below the lowest finished floor with positive drainage away from the building.
4. The three inch vent must tie back to the building vent and must be installed per the Florida Building Code, latest edition.
5. The slope of the influent and effluent laterals must comply with the Florida Building Code, Latest Edition.
6. Only kitchen waste shall be discharged to the grease interceptor. All domestic waste shall be connected downstream of the grease interceptor.
7. All tank volumes in excess of 1600 gallons shall include a 500 gallon grease polishing tank installed between the grease Interceptor and the downstream inspection sampling station. The volume of the polishing tank shall be included in the overall required volume.
8. All pipes and fittings shall comply with ASTM 2665.
9. Inspection/Sampling Station required for all grease traps (indoor) and grease interceptors (outdoor).
10. Inspection/Sampling Station can be used in lieu of a sanitary clean out if located within five feet of the building when grease traps are utilized.
11. All concrete shall be minimum  $f_c=4500$  psi and all steel shall be minimum  $f_y=60$  ksi.
12. Alternative designs must be approved by the City Engineer.

**Grease Interceptor Dimensions 750 To 3,500 Gallons**

Tank Size(Gal.)	A	B	C	D	E	F	G	H
750	7'-6"	6'-6"	1'-6"	1'-0"	5'-0"	4'-0"	2'-0"	6'-0"
1000	9'-0"	8'-0"	1'-6"	1'-6"	5'-0"	4'-0"	2'-0"	7'-4"
1250	9'-0"	8'-0"	1'-6"	1'-6"	5'-0"	4'-0"	2'-0"	7'-4"
1600	11'-6"	10'-6"	1'-6"	1'-6"	5'-0"	4'-0"	2'-0"	7'-4"
2000	11'-6"	10'-6"	1'-6"	1'-6"	6'-0"	5'-0"	2'-6"	7'-0"
2500	11'-6"	10'-6"	1'-6"	1'-6"	6'-0"	5'-0"	2'-6"	8'-4"
3000	13'-0"	12'-0"	1'-6"	1'-6"	7'-0"	6'-0"	3'-0"	9'-1"
3500	13'-0"	12'-0"	1'-6"	1'-6"	7'-0"	6'-0"	3'-0"	9'-1"

**Grease Interceptor Dimensions 750 To 3,500 Gallons**

Tank Size(Gal.)	I	J	K	L	M	N	O	P
750	5'-0"	4'-2"	0'-4"	0'-4"	3'-11"	2'-0 1/2"	2'-0"	0'-6"
1000	6'-4"	4'-5"	0'-4"	0'-4"	4'-2"	2'-10 1/2"	3'-6"	0'-6"
1250	6'-4"	5'-6"	0'-4"	0'-4"	5'-3"	2'-10 1/2"	3'-6"	0'-6"
1600	6'-0"	4'-4"	0'-4"	0'-4"	4'-1"	3'-4 1/2"	3'-6"	0'-6"
2000	6'-0"	5'-4"	0'-4"	0'-4"	5'-1"	3'-4 1/2"	3'-6"	0'-6"
2500	7'-4"	6'-7"	0'-4"	0'-4"	6'-4"	3'-4 1/2"	3'-6"	0'-6"
3000	8'-0"	5'-6 1/2"	0'-4"	0'-4"	5'-3 1/2"	3'-10 1/2"	3'-6"	0'-7"
3500	8'-0"	6'-9"	0'-4"	0'-4"	6'-6"	3'-10 1/2"	3'-6"	0'-7"



CITY OF ALTAMONTE SPRINGS  
950 CALABRIA DRIVE  
ALTAMONTE SPRINGS, FLORIDA 32714

## GREASE INTERCEPTOR - 750 TO 3,500 GALLONS

**SS005-3A**

ISSUED 2017

REVISED 03/01/2017 BY DJB